

# Smoky Lake County

[www.smokylakecounty.ab.ca](http://www.smokylakecounty.ab.ca)

## Welcome

Welcome to our community. We hope the information contained within this profile is useful. If additional information is required, please contact our representative from the "Key Contacts" section.

## Area Overview

The County of Smoky Lake is located in northeast Alberta, approximately 120 km from Edmonton. It encompasses the Town of Smoky Lake, and the Villages of Waskatenau and Vilna.

The regional economy is based on agriculture and forestry. In addition, the County is home to some of the most impressive natural areas in the province. As such, the tourism industry, particularly eco-tourism, is seen as having significant potential in the area.

The County of Smoky Lake offers a wide variety of recreational opportunities, from camping and fishing to hiking in the many natural areas in the County. Also, the County has a rich history back to the early 1900's and, as a result, there are many historical sites and points of interest throughout the County. Finally, each of the communities have many activities and events for residents and visitors alike, which attests to the strong community spirit of the County of Smoky Lake.

## Location

The County of Smoky Lake is located approximately 120 km northeast of Edmonton. It is approximately a one hour drive to Edmonton's city limits to the southwest; the Town of Vegreville to the south; the Town of St. Paul to the east and the Town of Lac La Biche to the northeast.

## Economic Base

Primary natural resources in the area include large deposits of natural gas, extensive areas of peat, some forested areas suitable for logging; a large number of lakes and natural areas attractive to vacationers and wildlife enthusiasts, and a 50 mile stretch of the north shore of the North Saskatchewan River, virtually undeveloped.

The major economic base of the County is agriculture. The area has grazing lands to the north, good quality flat crop lands to the west, a climate suitable for most crops, ready access to processing facilities, and a large domestic market in Edmonton.

Tourism is a significant growth industry for the County, with numerous small business enterprises starting to evolve as the large Edmonton market looks closer to home for vacation and recreation opportunities. The area is viewed as having significant potential for eco-tourism ventures.

The forest industry has a significant impact on the County as a result of the Alberta Government's Pine Ridge Forest Nursery, a world-scale facility providing tree seedlings

for reforestation projects throughout the province. The location of this facility has encouraged development in a nearby rural location of a privately operated greenhouse producing nursery stock for reforestation purposes.

## Economic Facts

The major industrial facility in the County is Holgerson Dairies Inc., a dairy processing plant which employs approximately 50 people and ships fluid milk and manufactured milk products throughout the north and north-central Alberta. The Town of Smoky Lake serves as a service centre for a large area in all directions.

A major industry in the rural area is a peat processing plant which harvests, dries and ships peat to Edmonton for containerization and distribution. Large areas of undeveloped peat lands are located in the regions to the north and east of the County.

### Major Businesses Products/Services

Holgerson Dairies Inc. Dairy Processing

### Financial Institutions

Financial institutions that serve the area include the Toronto Dominion Bank [Smoky Lake, Vilna], Canadian Imperial Bank of Commerce [Smoky Lake, Waskatenau], and Alberta Treasury Branch [Smoky Lake, Vilna, Waskatenau]. An office of the Agriculture Financial Services Corporation and Farm Credit Corporation are also located in the County.

## Utilities

### Electrical Power

Alberta Power Ltd.  
Box 400, #15 White Earth Street  
Smoky Lake, Alberta  
T0A 3C0  
Tel: 403-656-3770

### Natural Gas

County of Smoky Lake Natural Gas System  
Box 310  
Smoky Lake, Alberta  
T0A 3C0  
Tel: 403-656-3037 [emergencies only]

### Telephone

A.G.T. Limited  
Residential [Tel: 403-310-2255]  
Business [Tel: 403-310-3100]

### Water Supply

The Town of Smoky Lake and the Villages of Warspite, Vilna and Waskatenau administer their own water supply. The Hamlet of Spedden is supplied with a central "truck fill" facility with metred well water. All other residents are responsible for their own water service.

### Waste Management

The Town of Smoky Lake, the Villages of Waskatenau, Warspite and Vilna, and the

Hamlet of Bellis have community sewage treatment facilities [lagoons]. Sewage treatment in other areas is completed privately.

Weekly garbage collection is available in the Town of Smoky Lake and the Villages of Waskatenau, Warspite and Vilna. Garbage in other areas is privately hauled to landfill sites near Smoky Lake, Vilna, Spedden, Bellis and Waskatenau.

## Taxation

	<b><u>Residential/Farmland</u></b>	<b><u>Non-Residential</u></b>
<b><u>2004</u></b>		
Municipal Tax Rate	7.5100	14.2600
Education - Alberta School Foundation Fund Tax Rate	4.7340	7.5150
Seniors Lodge Accommodation Tax Rate	.5950	.5950

Mill Rates [1995]

Residential - Public 26.036  
Residential - Separate N/A  
Non-Residential - Public 24.188  
Non-Residential - Separate N/A

The pipeline mill rate is 26.118.

## Transportation

### Air Services

A grass air strip is located immediately to the east of the Town of Smoky Lake, which is maintained for casual summer use. National and international air service is available at Edmonton Industrial and Edmonton International Airports.

### Rail Services

A major branch line of the CNR passes through the communities within the County, connecting Edmonton with Cold Lake and the military air base.

### Highways

The County of Smoky Lake is located about an hour's distance from Edmonton, immediately beside Highway 28, the main highway connecting Edmonton with the Lakeland Tourism Region and the Cold Lake military air base.

Secondary Highway 855 provides access southward via Highways 45 and 16 to the Yellowhead Route to the more eastern provinces and to the south and east sectors of the province. A network of highways connects through to Lethbridge and Medicine Hat and the U.S. border bypassing the major population centres of Edmonton and Calgary.

Highway 36, about 25 minutes east of the Town of Smoky Lake, provides direct paved access to Lac La Biche and to Fort McMurray and the Athabasca Tar Sands developments.

Highways 855, 45, 15 and 21 provide paved access to the Edmonton International Airport, avoiding the congestion of Edmonton city traffic.

A network of primary and secondary highways serve the County region, providing

access to the western regions of the province and Peace River Country, without the need of dealing with restrictions of traffic in a large population centre.

#### Trucking Firms

Several trucking firms serve the County, providing general and specialized transportation services, including livestock hauling.

#### Bus Services

Greyhound Bus Lines operates a twice daily passenger and courier service within the County and Cold Lake, and between the County and Edmonton. In addition, Carson Tours operates a luxury bus charter service from the area.

#### Couriers and Taxis

National and international couriers such as Loomis and Purolator supply daily service to the County. In addition, Greyhound Courier Express offers twice daily courier service, and Canada Post offers daily courier service.

## Community Lifestyle

#### Recreation

The Town of Smoky Lake and the communities have a wide range of recreational facilities including curling rinks, ice arenas, dance halls, gymnasiums, ball diamonds, campgrounds, kid's playgrounds and senior citizens drop-in centres.

Nearby resort areas include the Smoky Lake Campground, Victoria Picnic Grounds, Hanmore Lake Campground [west][east], Warspite Picnic Grounds, Island Lake Campground, Mons Lake Campground, Bellis Lake Campground, Garner Lake Provincial Park, Bonnie Lake Campground, Vilna Lions Club Rest Area, and the Village Park [day use].

Other points of interest include the Bellis Natural Area, Smoky Lake Golf Course, Holgerson Dairies, Kalyna Country Ecomuseum, Waskatenau Trestle, Victoria Trail, Pine Creek Post Office and General Store, Fort Victoria, Pine Ridge Forest Nursery, World's Largest Mushroom, Vilna Pool Hall, Vilna Golf Course and the Kubasa Canyon.

#### Community Organizations

There are a wide range of community organizations, sports clubs and service groups that are active throughout the County.

#### Religious Services

Most religious denominations are represented in the County.

#### Special Annual Events/Attractions

Local cultural facilities include the Smoky Lake Museum, Smoky Lake. Also the Historic CNR Station is a museum that also houses the Tourist Information Booth and the White Earth Art Gallery.

A wide range of annual events take place throughout the County, including the Smoky Lake Stampede and Heritage Days [Smoky Lake, long weekend in August], Great White North Pumpkin Fair and Weigh-off [Smoky Lake, October], the Victoria Trail Agricultural Society Annual Fair [Waskatenau, August], Vilna Fair Days [Vilna, 3rd weekend in August], Warspite Farmers Day Weekend Celebration [Warspite, second weekend in June], Bellis 9th Annual Slow Pitch Tournament [Bellis, May long

weekend], and the 11th Annual Fort Victoria Days [Fort Victoria, August].

## Hospitality

### Accommodation

Overnight accommodation is available in the Town of Smoky Lake, Vilna, Waskatenau, Warspite and Spedden. There are also two bed & breakfast establishments in the Smoky Lake area.

### Restaurants

Dining establishments are available in Smoky Lake, Vilna, Waskatenau and Spedden.

## Education

The County is part of the Aspen View Regional Division, headquartered in the Town of Athabasca [Tel: 403-675-2273].

### Daycare/Nursery

Day cares and nurseries are located throughout the County.

### Public

Public schooling is available in Smoky Lake [K-12], Vilna [K-12], Waskatenau [K-8], and Bellis [K-6].

### Separate

N/A

### Private

N/A

## Post Secondary Education

Post-secondary institutions in Edmonton such as The University of Alberta, Grant MacEwan College and the Northern Alberta Institute of Technology [NAIT], are approximately 1 hour's drive from the County of Smoky Lake.

## Health Care

Hospital care is available at the George McDougall Memorial and Auxiliary Hospital in Smoky Lake [10 acute care beds, laboratory and diagnostic imaging, community-based services, respite and palliative programs], and Our Lady's Hospital in Vilna [continuing care beds, community-based services, laboratory and diagnostic imaging, respite and palliative programs]. Medical clinics and nursing homes are available in Smoky Lake and Vilna, while senior citizens homes are available in Smoky Lake, Waskatenau and Vilna.

The County is also served by the North Eastern Alberta Health Unit, which provides programs in home care, speech-language pathology, community health nursing, hereditary diseases, environmental health, nutrition, dental, Alberta Aids to Daily Living, family life and health promotion.

## Emergency Services

### Fire Protection

The County is served by a 15-member volunteer fire department based in Smoky Lake. It serves the area from Warspite to the River, east to Bellis and north past Hanmore Lake. There are also fire departments that serve the Town of Smoky Lake, Vilna and Waskatenau. The volunteer fire departments in Vilna and Waskatenau serve the residents in the eastern and western regions of the County.

#### Police Services

The County is served by the Royal Canadian Mounted Police, based in Smoky Lake.

#### Ambulance Services

Paramedic and ambulance services are provided by Mystique Ambulance. An Advanced Life Support [ALS] level of service is available.

## Community Services

#### Municipal

County of Smoky Lake No. 13  
Box 310  
Smoky Lake, Alberta  
T0A 3C0  
Tel: 403-656-3730  
Fax: 403-656-3768

#### Provincial

Several provincial departments have offices in the County, including Alberta Agriculture, Alberta Financial Services Corporation, Fish & Wildlife, and the Pine Ridge Forest Nursery.

#### Federal

Canada Post  
Royal Canadian Mounted Police  
Farm Credit Corporation

## Key Contacts for Business Development

#### Municipal

County of Smoky Lake No. 13  
Box 310  
Smoky Lake, Alberta  
T0A 3C0  
Tel: 780-656-3730  
Fax: 780-656-3768  
[countysl@telusplanet.net](mailto:countysl@telusplanet.net)

Peter Apedaile  
Reeve

Mr. Cary Smigerowsky  
Chief Administrative Officer  
[county@smokylakecounty.ab.ca](mailto:county@smokylakecounty.ab.ca)

Mr. Paul Pelletier  
General Manager

The REACH Corporation (A Community Futures Corporation)  
Box 310  
Smoky Lake, Alberta  
T0A 3C0  
Tel: 780-656-2110  
[E-Mail: slbccdc@mcsnet.ab.ca.](mailto:slbccdc@mcsnet.ab.ca)

Provincial (Updated December 2004)

[Alberta Economic Development](#)

Box 412  
Room 308, Provincial Building  
5025 - 49 Avenue  
St. Paul, Alberta  
T0A 3A4  
Tel: 780-645-6358  
Fax: 780-645-6241  
[Garry Krause](#), Regional Manager  
[Maryann Robinson](#), Client Service Representative

Hon. Mike Cardinal  
Member of the Legislative Assembly (MLA)  
Redwater Constituency

Constituency Office  
Box 408, 4908 - 50 Avenue  
Redwater, AB T0A 2W0  
Phone: (780) 942-3505  
Fax: (780) 942-3506  
Toll Free Number: 1-800-387-6548  
[Redwater@assembly.ab.ca](mailto:Redwater@assembly.ab.ca)

Legislature Office  
721 Legislative Annex  
9718 - 107 Street  
Edmonton, AB  
T5K 1E4  
Phone: (780) 415-0955  
Fax: (780) 422-1671

Federal (Updated June 2004)

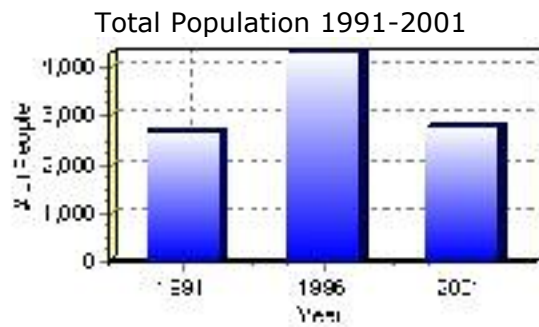
Dave Chatters  
Member of Parliament [MP]  
Westlock-St. Paul Constituency  
House of Commons  
Ottawa, Ontario  
K1A 0A6

Constituency Office:  
To be established soon. In the meantime, call 1-800-667-8450.

# Population

Total Population	
Population 2004*	2,773
Population 2003*	2,773
Population 2002*	2,773
Population 2001**	4,415
Population 2000*	2,857
Population 1996**	4,302
Population 1991**	2,689
Population % change 1991-1996	37.49%
Population % change 1996-2001	-55.14%

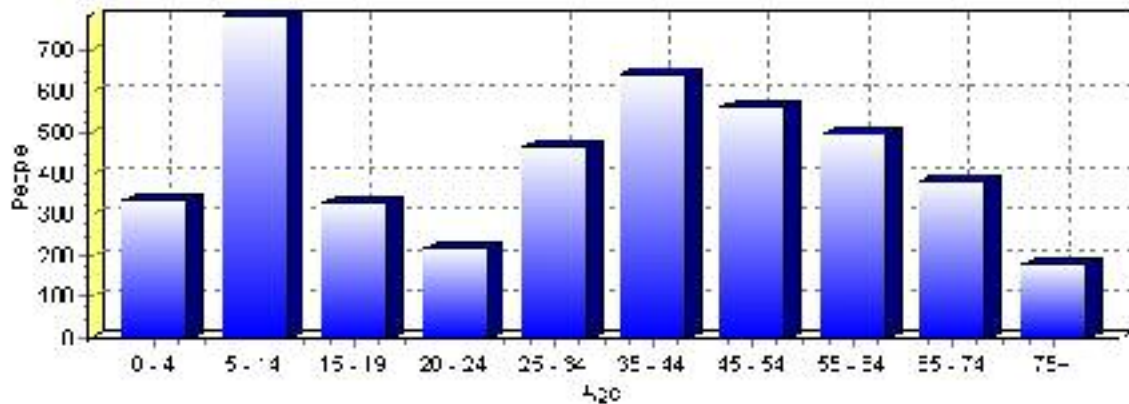
\* Source: Official Population List, Alberta Municipal Affairs  
 \*\* Source: Statistics Canada 1991, 1996, & 2001 Census



Population by Age and Gender	1996 Male	1996 Female	1996 Total	2001 Male	2001 Female	2001 Total
Age 0 - 4	180	170	350	165	170	335
Age 5 - 14	405	380	785	395	390	785
Age 15 - 19	175	145	320	185	145	330
Age 20 - 24	120	105	225	120	100	220
Age 25 - 34	275	285	560	220	250	470
Age 35 - 44	315	260	575	345	300	645
Age 45 - 54	225	260	485	290	275	565
Age 55 - 64	265	250	515	260	235	495
Age 65 - 74	195	140	335	215	170	385
Age 75 and older	95	50	145	105	75	180
Total All Persons	2,255	2,050	4,305	2,305	2,110	4,415

Source: Statistics Canada 1996 & 2001 Census (numbers may not add up due to rounding)

Smoky Lake County Population by Age Group (2001)

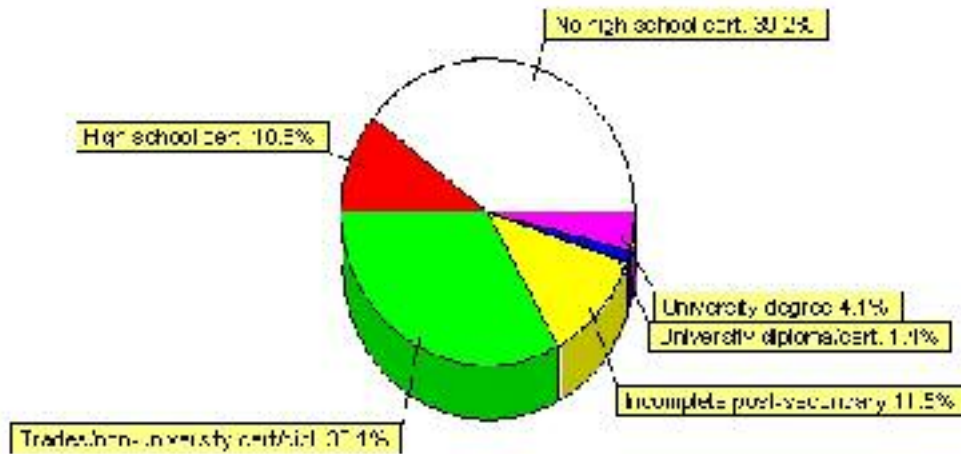


# Education

Highest level of schooling for Population 20yrs and older	2001	%
People without high school certificates	1,160	39.19%
People with high school certificates	310	10.47%
People with trades or non-university certificate or diploma	980	33.11%
People with post-secondary education (not completed)	340	11.49%
People with university diploma/certificate	40	1.35%
People with university degree	120	4.05%
Total Population 20 years and older	2,960	100.00%

Source: Statistics Canada 2001 Census (numbers may not add up due to rounding)

Smoky Lake County Highest Level of Schooling 2001



Population with Post Secondary Qualifications	1996	%	2001	%
Agriculture and biological sciences	90	10.29%	100	8.62%
Commerce, management and business administration	150	17.14%	200	17.24%
Educational, recreational and counseling services	95	10.86%	120	10.34%
Engineering and applied science tech. and trades	345	39.43%	360	31.03%
Engineering and applied sciences	10	1.14%	10	0.86%
Fine and applied arts	30	3.43%	45	3.88%
Health professionals, science and technologies	100	11.43%	200	17.24%
Humanities and related fields	25	2.86%	15	1.29%
Mathematics and physical sciences	0	0.00%	0	0.00%
Social sciences and related fields	25	2.86%	105	9.05%
Other and/or no specialization	0	0.00%	0	0.00%
Total people with post secondary qualifications	875	100.00%	1,160	100.00%
Females with post-secondary qualifications	375	42.86%	590	50.86%
Males with post-secondary qualifications	500	57.14%	570	49.14%

Source: Statistics Canada 1996 & 2001 Census (numbers may not add up due to rounding)

# Labour Force

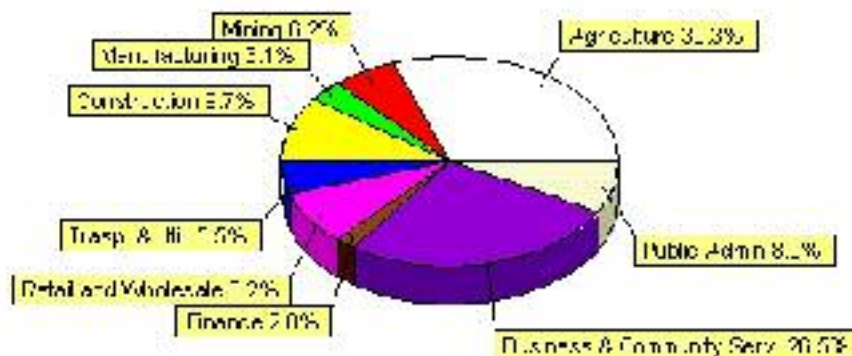
Labour force by activity	1996	2001
In the labour force, both sexes	2,255	2,300
Not in the labour force, both sexes	915	980
Total population 15 and over	3,170	3,275
Employed, both sexes	1,965	2,075
Unemployed, both sexes	290	215
Participation rate, both sexes	71.00%	70.00%
Unemployment rate, both sexes	12.00%	9.00%

Source: Statistics Canada 1996 & 2001 Census (numbers may not add up due to rounding)

Labour Force by Industry Division	1996	% of total	2001	% of total
Agriculture	755	34.47%	685	30.31%
Mining	95	4.34%	140	6.19%
Manufacturing	105	4.79%	70	3.10%
Construction	190	8.68%	220	9.73%
Transportation. & Utilities	140	6.39%	125	5.53%
Retail and Wholesale	190	8.68%	185	8.19%
Finance	10	0.46%	45	1.99%
Business & Community Services	625	28.54%	600	26.55%
Public Administration	265	12.10%	180	7.96%
Total All Industries	2,190	100.00%	2,260	100.00%

Source: Statistics Canada 1996 & 2001 Census (numbers may not add up due to rounding)

Smoky Lake County Labour Force By Industry - 2001



Labour Force by Major Occupational Groups	1996	%	2001	%
Management occupations	60	2.74%	185	8.17%
Business, Finances and administrative occupations	180	8.22%	160	7.06%
Natural and applied sciences and related occupations	65	2.97%	40	1.77%
Health occupations	65	2.97%	80	3.53%
Occupations in social science; education; government and religion	55	2.51%	125	5.52%
Occupations in art; culture; recreation and sport	20	0.91%	35	1.55%
Sales and service occupations	345	15.75%	375	16.56%
Trades; transport; equipment operators and related occupations	520	23.74%	440	19.43%
Occupations unique to primary industry	795	36.30%	760	33.55%
Occupations unique to processing; manufacturing and utilities	85	3.88%	65	2.87%
Occupations not elsewhere classified	75	3.42%	35	1.55%
Total - All Occupations (major groups)	2,190	100.00%	2,265	100.00%
Females - All Occupations	945	43.15%	960	42.38%
Males - All Occupations	1,245	56.85%	1,300	57.40%

Source: Statistics Canada 1996 & 2001 Census (numbers may not add up due to rounding)

# Income

Family Income (Number of Families)	1996	%	2001	%
less than \$19,999	270	25.71%	220	19.82%
\$20,000 - \$39,999	385	36.67%	475	42.79%
\$40,000 - \$59,999	200	19.05%	285	25.68%
\$60,000 and over	195	18.57%	185	16.67%
Total number of families	1,050	100.00%	1,165	104.95%
Average family income	\$37,833		\$45,021	
Median family income	\$28,620		\$36,873	

Source: Statistics Canada 1996 & 2001 Census (numbers may not add up due to rounding)

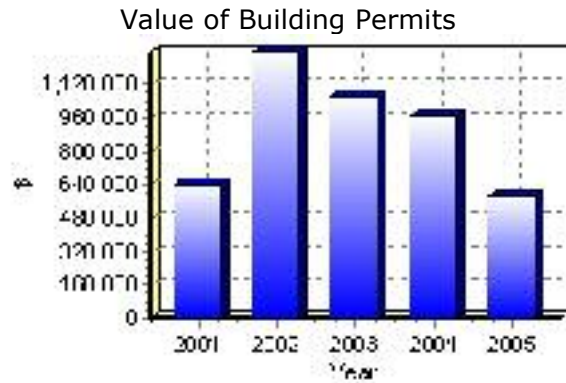
Household Income (Number of Households)	1996	%	2001	%
less than \$19,999	200	14.23%	315	21.43%
\$20,000 - \$39,999	490	34.88%	530	36.05%
\$40,000 - \$59,999	220	15.66%	310	21.09%
\$60,000 and over	50	3.56%	310	21.09%
Total number of households	1,405	100.00%	1,470	100.00%
Average household income	\$34,388		\$44,995	
Median household income	\$27,173		\$36,028	

Source: Statistics Canada 1996 & 2001 Census (numbers may not add up due to rounding)

## Building Permits

Total Building Permit Values	2001	2002	2003	2004	2005
Building Permits Value, Commercial	\$120,000	\$0	\$175,000	\$15,000	\$0
Building Permits Value, Industrial	\$0	\$100,000	\$0	\$0	\$0
Building Permits Value, Institutional	\$0	\$0	\$20,000	\$400,000	\$0
Building Permits Value, Residential	\$519,000	\$1,177,000	\$866,000	\$555,000	\$589,000
Building Permits Value, Total	\$639,000	\$1,277,000	\$1,061,000	\$970,000	\$589,000
Total Housing Starts	4	11	6	4	3

Source: Statistics Canada 2001-2005 Building Permits (numbers may not add up due to rounding)



## Dwellings

Occupied Private Dwellings by Type	1996	% of total	2001	% of total
Apartments	0	0.00%	0	0.00%
Detached Duplexes	0	0.00%	0	0.00%
Movable Dwellings	110	7.80%	65	4.42%
Other single attached house	0	0.00%	5	0.34%
Row and semi-detached house	0	0.00%	0	0.00%
Single-detached house	1,295	91.84%	1,395	94.90%
Total number of occupied private dwellings	1,410	100.00%	1,470	100.00%
Private dwellings, owned	1,295	91.84%	1,335	90.82%
Private Dwellings, rented	110	7.80%	130	8.84%

Source: Statistics Canada 1996 & 2001 Census (numbers may not add up due to rounding)

Private Dwellings by Period of Construction	# of Dwellings	% of total
Period of construction, before 1946	165	11.22%
Period of construction, 1946 - 1960	210	14.29%
Period of construction, 1961 - 1970	115	7.82%
Period of construction, 1971 - 1980	240	16.33%
Period of construction, 1981 - 1990	340	23.13%
Period of construction, 1991 - 2001	400	27.21%
Total number of private dwellings constructed	1,470	100.00%

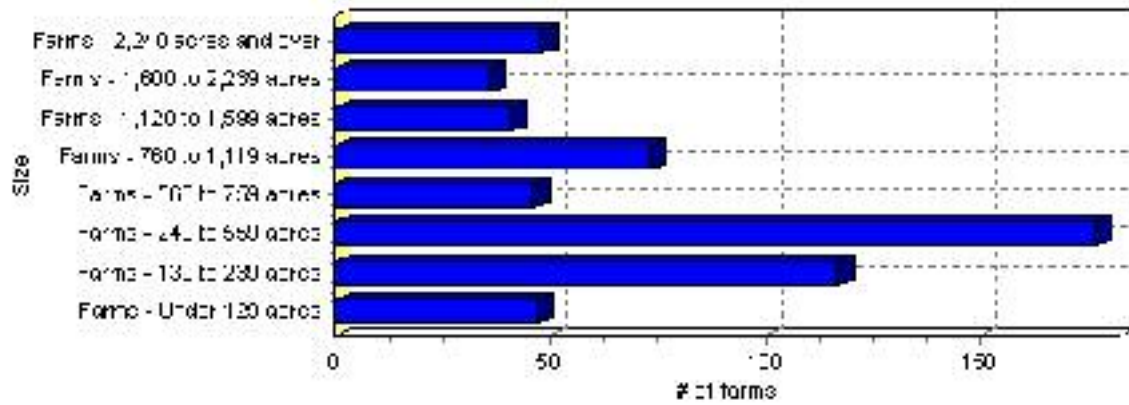
Source: Statistics Canada 2001 Census (numbers may not add up due to rounding)

# Farming

Farms by Total Farm Area (2001)	# of Farms	% of total
Farms - Under 129 acres	47	8.03%
Farms - 130 to 239 acres	117	20.00%
Farms - 240 to 559 acres	177	30.26%
Farms - 560 to 759 acres	46	7.86%
Farms - 760 to 1,119 acres	73	12.48%
Farms - 1,120 to 1,599 acres	41	7.01%
Farms - 1,600 to 2,239 acres	36	6.15%
Farms - 2,240 acres and over	48	8.21%
Total number of farms reporting	585	100.00%

Source: Statistics Canada 2001 Census of Agriculture (numbers may not add up due to rounding)

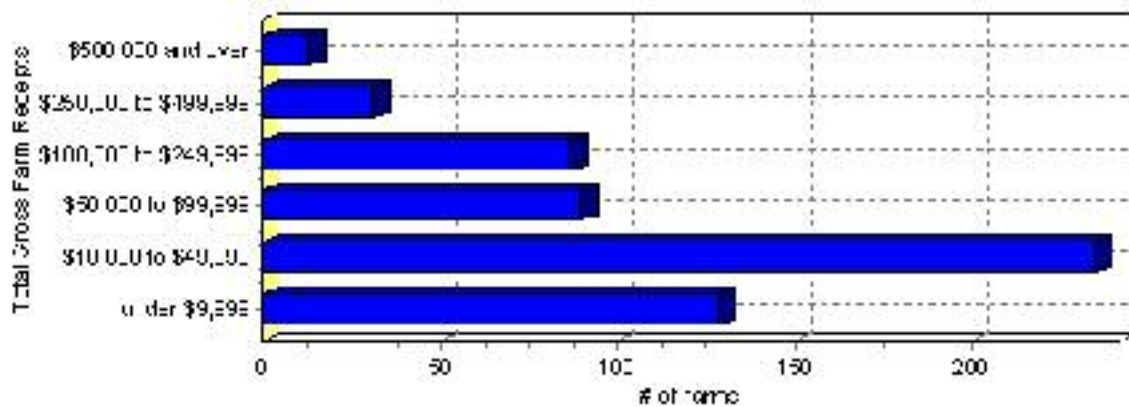
# of Farms by Total Farm Area



Farms by Total Gross Farm Receipts - 2001	# of Farms	% of total
Farms gross farm receipts - under \$9,999	129	22.05%
Farms gross farm receipts - \$10,000 to \$49,999	235	40.17%
Farms gross farm receipts - \$50,000 to \$99,999	90	15.38%
Farms gross farm receipts - \$100,000 to \$249,999	87	14.87%
Farms gross farm receipts - \$250,000 to \$499,999	31	5.30%
Farms gross farm receipts - \$500,000 and over	13	2.22%
Total number of farms reporting	585	100.00%

Source: Statistics Canada 2001 Census of Agriculture (numbers may not add up due to rounding)

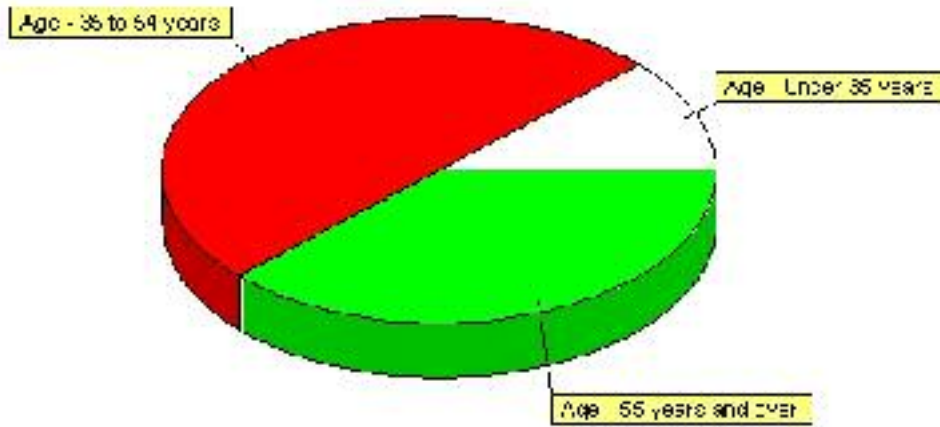
Total Gross Farm Receipts



# Farming, Continued

Characteristics of Farm Operators	#	%
Age - Under 35 years	100	12.12%
Age - 35 to 54 years	410	49.70%
Age - 55 years and over	310	37.58%
Average age of operators	50	
<b>Number of operators - Female</b>		
Number of operators - Female	220	26.67%
<b>Number of operators - Male</b>		
Number of operators - Male	605	73.33%
Total number of operators reporting	825	100.00%
Source: Statistics Canada 2001 Census of Agriculture(numbers may not add up due to rounding)		

Age of Farm Operators



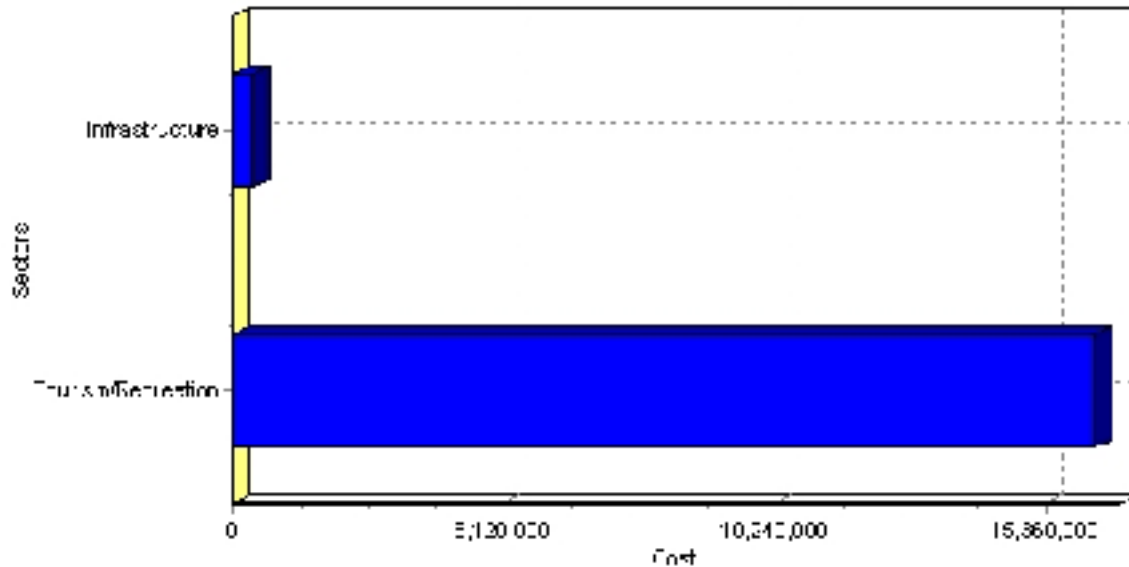
# Summary of Projects in Smoky Lake County

as of December 2005

Project Sector	Number of Projects	Project Cost
Tourism/Recreation	2	\$16,300,000
Infrastructure	1	\$361,660
<b>Total</b>	<b>3</b>	<b>\$16,661,660</b>

This inventory lists projects in Alberta that have recently been completed, are under construction, or are proposed to start construction. Not all projects are listed due to reasons of confidentiality and/or due to information not being available at the time of printing. Project data is obtained from public information sources, where possible, this data has been verified with the project proponent/developer, users of the Inventory may wish to confirm project data with the proponent/developer. The inventory does not breakdown project expenditures by any given year. The cost of a project is the value of expenditures expected over all phases of project construction, which may span over two or more years. Cost of projects listed in the Inventory are estimated values only. Source: Alberta Economic Development, 2004.

Value of Projects by Sector (as of December 2005)



Project Status	Number of Projects	Project Cost
Announced	2	\$1,661,660
Under Construction	1	\$15,000,000
<b>Total</b>	<b>3</b>	<b>\$16,661,660</b>

This inventory lists projects in Alberta that have recently been completed, are under construction, or are proposed to start construction. Not all projects are listed due to reasons of confidentiality and/or due to information not being available at the time of printing. Project data is obtained from public information sources, where possible, this data has been verified with the project proponent/developer, users of the Inventory may wish to confirm project data with the proponent/developer. The inventory does not breakdown project expenditures by any given year. The cost of a project is the value of expenditures expected over all phases of project construction, which may span over two or more years. Cost of projects listed in the Inventory are estimated values only. Source: Alberta Economic Development, 2004.

# Largest Projects in Smoky Lake County

as of December 2005

Company Name	Project Description	Project Location	Project Cost	Construction Schedule	Status
Metis Nation of Alberta	Cultural / Interpretive Centre	County of Smoky Lake (S of Smoky Lake)	\$15,000,000	2004-2007	Under Construction
Spirit River Arena	Upgrade	Spirit River	\$1,300,000	2005-2006	Announced
Town of Spirit River	WATER & SEWER LINE REPLACEMENT	Spirit River	\$361,660	2005-2006	Announced

Disclaimer: Information in this profile has been provided from a variety of external sources. Although every effort has been made to ensure the accuracy, currency and reliability of the content and data, AlbertaFirst.com Ltd. accepts no responsibility in this regard.

© AlbertaFirst.com Ltd., 2006.