

# Smoky Lake

[www.smokylake.ca](http://www.smokylake.ca)

## Welcome

Welcome to our community. We hope the information contained within this profile is useful. If additional information is required, please contact our representative from the "Key Contacts" section.



## Area Overview

N/A

## Location

The Town of Smoky Lake is located in the County of Smoky Lake #13, approximately 120 km northeast of Edmonton at the junction of Highway 28 and Secondary Highway 855. It is approximately one hour's drive from Edmonton's city limits. The Town of Vegreville is located to the south; the Town of St. Paul to the east and the Town of Lac La Biche to the northeast.

## Economic Base

The primary natural resources in the area are large deposits of natural gas, extensive areas of peat, some forested areas suitable for logging, a large number of lakes and natural areas, and a 50 mile stretch of the north shore of the North Saskatchewan River.

Agriculture composes the major base of the economy of the Smoky Lake area, and the major business sector in town is focused on providing agricultural services to the surrounding area. The forestry industry also has a significant impact on the Smoky Lake area, due to the nearby location of the Alberta Government's Pine Ridge Forest Nursery, a world scale facility providing tree seedlings for reforestation projects throughout the province. Also, tourism is a growth industry for the town and surrounding area, as changing economic factors encourage the Edmonton market to look closer to home for vacation and recreation opportunities.

## Economic Facts

Major industrial facilities include Holgerson Dairies Inc., a dairy processing plant which brought regional and national attention to the community when it introduced the recyclable, rigid plastic, milk jug to the Alberta market. The plant provides a full line of fluid milk products in the rigid plastic container, the only dairy in Canada known to use only rigid plastic in all sizes from 250 ml to 4 litres. Holgerson Dairies employs approximately 50 persons and delivers milk to retail outlets throughout northern and north central Alberta. Holgerson is also a leader in the recycling of milk containers and has developed an unique, plastic jug collection bin for use at retail centres.

A major industry in the nearby rural area is a peat processing plant which harvest, dries and ships peat to Edmonton for containerization and distribution. Large areas of undeveloped peat lands are located in the regions to the north and east of the Town of Smoky Lake.

Steel fabrication is a minor industry in the town and surrounding area with a number of highly qualified and innovative welders undertaking custom steel fabrication and manufacturing of recreation equipment such as campground stoves, steel framed picnic tables, etc., and agricultural implements such as manure spreaders, bale loader/carriers, ground rollers and specialty trailers.

#### Major Businesses Products/Services

Holgerson Dairies Inc. Dairy Producer and Distributor

#### Financial Institutions

Toronto Dominion Bank  
Canadian Imperial Bank of Commerce  
Alberta Treasury Branch  
Agriculture Financial Services Corporation  
Farm Credit Corporation

## Utilities

#### Electrical Power

Alberta Power Ltd.  
Box 400, #15 White Earth Street  
Smoky Lake, Alberta  
T0A 3C0  
Telephone: 403-656-3770

#### Natural Gas

Town of Smoky Lake Natural Gas System  
Box 460  
Smoky Lake, Alberta  
T0A 3C0  
Telephone: 403-656-3674

#### Telephone

Alberta Government Telephones Ltd.  
Telephone: 403-310-2255

#### Water Supply

The source of water is 4 wells. The reservoir capacity, measured in treated substance, is 1,364 cubic metres. The water usage rate is \$4.00 per 1,000 gallons.

## Waste Management

Sewage treatment is provided by a lagoon system consisting of 4 anaerobic cells, 2 aerobic cells, and 1 storage cell. Sewage rates vary according to the type of building. An example of sewage rates: self-contained dwellings, offices and stores - \$10.00 per month; industrial consumption up to 500,000 gallons - \$133.00 per month; industrial consumption of more than 500,000 gallons - \$187.00 per month.

Garbage collection rates are \$5.00 per month or \$10.00 per bin per month.

## Taxation

	<b><u>Residential/Farmland</u></b>	<b><u>Non-Residential</u></b>
<b><u>2004</u></b>		
Municipal Tax Rate	11.7500	14.5500
Education - Alberta School Foundation Fund Tax Rate	5.0776	8.0880
Seniors Lodge Accommodation Tax Rate	.6025	.6025

### Mill Rates [1994]

Residential - Public 27.555  
Residential - Separate N/A  
Non-Residential - Public 34.932  
Non-Residential - Separate N/A

## Transportation

### Air Services

A grass air strip is located to the east of Smoky Lake, which is maintained for casual summer use. The nearest commercial and air freight services are at the Edmonton Municipal Airport and Edmonton International Airport.

### Rail Services

A major branch line of the CNR passes through the Town of Smoky Lake connecting Edmonton with Cold Lake and the military air base.

### Highways

Smoky Lake is located at the junction of Highway 28 and Secondary Highway 855. It is connected to Highway #16 [Yellowhead Highway] via Highway #45 and Secondary Highway #855.

Highways 855, 45, 15 and 21 provide paved access to the Edmonton International Airport, a 1.5 hour drive from Smoky Lake.

### Trucking Firms

Several trucking firms serve Smoky Lake and region, providing general and specialized transportation services, including livestock hauling.

### Bus Services

Greyhound Bus Lines provides regularly scheduled inter-community service.

## Couriers and Taxis

Loomis and Purolator Couriers, as well as Greyhound Courier Express and Priority Courier, supply regular service to Smoky Lake.

## Community Lifestyle

### Recreation

Recreational facilities in Smoky Lake include a curling rink, ice arena, two dance halls, a gymnasium, a Participark, two ball diamonds, a campground, two kiddies playgrounds, and a senior citizen's drop-in centre. Also, there is the Smoky Lake Golf Course, a 9-hole course nestled in the White Earth Valley, and the Bellis Natural Area, a 16 square km area characterized by sand dunes, jack pine forests, sloughs and small lakes.

Campgrounds and recreational areas are plentiful, and include the Smoky Lake Campground, Victoria Picnic Grounds, Hanmore Lake Campground, Hanmore Lake Provincial Recreation Area, Warspite Picnic Grounds, Island Lake Recreational Area, Mons Lake Recreational Area, and the Bellis Lake Campground.

### Community Organizations

Smoky Lake Lions Club  
Smoky Lake Kinsmen Club  
Royal Canadian Legion  
Agricultural Society  
Smoky Lake & District Heritage and Cultural Society  
Various Church Organizations

### Religious Services

First Baptist Church  
Jehovah's Witnesses  
Seventh Day Adventist Church  
United Church of Canada  
Ukrainian Orthodox Church Manse  
Ukrainian Catholic Church

### Special Annual Events/Attractions

Cultural attractions in the Smoky Lake Museum, the White Earth Art Gallery, Historic Canadian National Railways [CNR] Station, and the Smoky Lake Tourist Information Booth.

### Annual Events:

Smoky Lake Stampede and Heritage Days -- August  
Great White North Pumpkin Fair and Weigh-off -- October

### Hospitality

#### Accommodation

Smoky Lake Inn  
Plainsman Motor Inn  
Sportsman Motor Inn  
Countrylane Bed and Breakfast  
Inn at the Ranch  
Kittyhawk Retreat

## Restaurants

Smoky Lake Hotel Restaurant  
Family Burger and Pizza  
Old Fashioned Bread Bakery Co. Ltd.  
Country Garden Cafe  
Red Chimney Restaurant & Dining Lounge  
Smoky Lake Shell  
Jim's Chinese Restaurant  
Country Lane Antiques and Tea Shop

## Education

Smoky Lake is served by the Aspen View Regional Division, headquartered in the Town of Athabasca [telephone: 780-675-2273].

### Daycare/Nursery

There are no daycares in Smoky Lake.

### Public

The public school in Smoky Lake is H.A. Kostash School, which provides education from Grades 1 to 12. Smoky Lake also has the Hutterite Colony School, which provides education from Grades 1 to 9. The Hutterite School is located at H.A. Kostash School.

### Separate

N/A

### Private

N/A

## Post Secondary Education

Post-secondary institutions in Edmonton such as The University of Alberta, Grant MacEwan College and the Northern Alberta Institute of Technology [NAIT], are approximately 1 hour's drive from Smoky Lake.

## Health Care

George McDougall Memorial and Auxiliary Hospital, located in Smoky Lake, has 10 acute care beds, 24-hour emergency services, laboratory and diagnostic imaging, and a full range of community-based services.

The Northeastern Alberta Health Unit has an office in Smoky Lake, and provides home care, speech-language pathology, community health nursing, hereditary disease, environmental health, nutrition, dental, Alberta Aids to Living, family life and health promotion programs.

Smoky Lake is also served by two medical clinics, a nursing home with 56 continuing care beds, and a full range of senior citizen housing [Smoky Lake Foundation Homes for Senior Citizens, Bar-V-Nook Manor, 4-Plex, Cedar Manor West, Cedar Manor East, Sunrise Villa, Golden Valley Villa].

## Emergency Services

### Fire Protection

Smoky Lake has a 15-member volunteer fire department, with 1 pumper unit and 1 rescue unit [telephone: 403-656-3811].

#### Police Services

Smoky Lake is served by a local detachment of the Royal Canadian Mounted Police [RCMP] [telephone: 403-656-3691].

#### Ambulance Services

Smoky Lake is served by Mystique Ambulance, which provides Advanced Life Support services [telephone: 403-656-4111].

## Community Services

#### Municipal

Town of Smoky Lake  
Box 460  
Smoky Lake, Alberta  
T0A 3C0  
Telephone: 403-656-3674  
Fax: 403-656-3675

Town of Smoky Lake Public Library  
5010-50 Street  
Phone/Fax : (780)656-4212  
Email: [librarian@smokylakelibrary.ab.ca](mailto:librarian@smokylakelibrary.ab.ca)

#### Provincial

Alberta Agriculture  
Alberta Financial Services Corporation  
Fish & Wildlife  
Medical Examiner-Coroner  
Provincial Court  
Transportation and Utilities

#### Federal

Canada Post  
Farm Credit Corporation  
Royal Canadian Mounted Police

## Key Contacts for Business Development

#### Municipal

Town of Smoky Lake  
Box 460  
Smoky Lake, Alberta  
T0A 3C0  
Telephone: 780-656-3674  
Fax: 780-656-3675  
[sltown@telusplanet.net](mailto:sltown@telusplanet.net)

Carole Carpenter  
Mayor

Barbara Spurgeon

Chief Administrative Officer  
[bspurgeon@town.smokylake.ab.ca](mailto:bspurgeon@town.smokylake.ab.ca)

Ernie Brousseau - President  
Smoky Lake & District Chamber of Commerce  
Box 654  
Smoky Lake, AB T0A 3C0  
Phone: 780-656-4347

Regional Economic Development Officer  
Smoky Lake Regional Economic Development Committee  
Box 310  
Smoky Lake, Alberta  
T0A 3C0  
Telephone: 780-656-3730  
Fax: 780-656-3768

Provincial (Updated May 2001)

[Alberta Economic Development](#)

Box 412  
Room 308, Provincial Building  
5025 - 49 Avenue  
St. Paul, Alberta  
T0A 3A4  
Tel: 780-645-6358  
Fax: 780-645-6241  
[Garry Krause](#), Regional Manager  
[Maryann Robinson](#), Client Service Representative

REACH Corporation (A Community Futures Corporation)  
Dick Millar - Acting General Manager  
5015 - 49 Avenue  
St. Paul, Alberta  
T0A 3A4  
(780) 645-5782

Dave Broda  
Member of the Legislative Assembly (MLA)  
Redwater Constituency

Constituency Office  
Box 408, 4908 - 50 Avenue  
Redwater, AB T0A 2W0  
Phone: (780) 942-3505  
Fax: (780) 942-3506  
Toll Free Number: 1-800-387-6548  
[Redwater@assembly.ab.ca](mailto:Redwater@assembly.ab.ca)

Legislature Office  
721 Legislative Annex  
9718 - 107 Street  
Edmonton, AB  
T5K 1E4  
Phone: (780) 415-0955  
Fax: (780) 422-1671

Federal (Updated January 2006)

Brian Storseth  
Member of Parliament [MP]

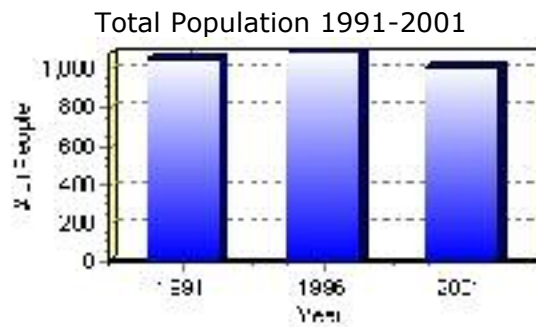
Westlock-St. Paul Constituency  
House of Commons  
Ottawa ON K1A 0A6

Constituency Office:  
To be established soon.

# Population

Total Population	
Population 2004*	1,011
Population 2003*	1,011
Population 2002*	1,011
Population 2001**	1,010
Population 2000*	1,087
Population 1996**	1,087
Population 1991**	1,057
Population % change 1991-1996	2.76%
Population % change 1996-2001	-7.52%

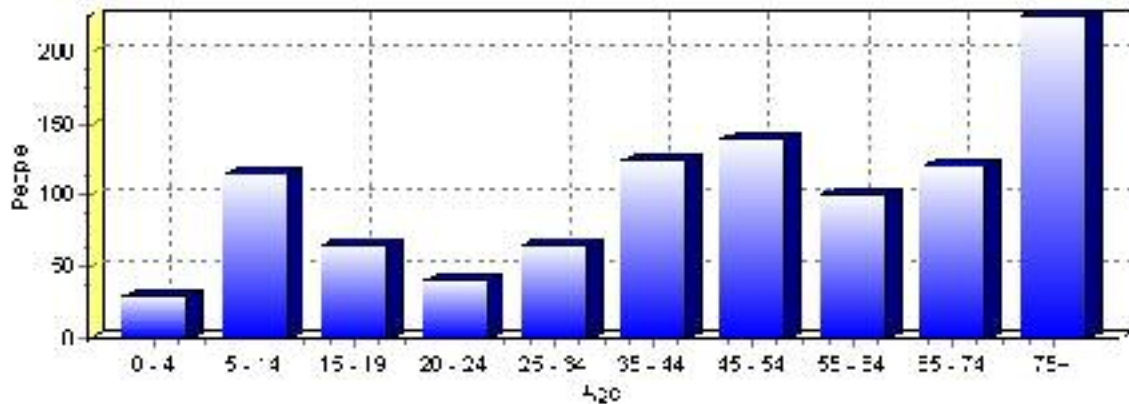
\* Source: Official Population List, Alberta Municipal Affairs  
 \*\* Source: Statistics Canada 1991, 1996, & 2001 Census



Population by Age and Gender	1996 Male	1996 Female	1996 Total	2001 Male	2001 Female	2001 Total
Age 0 - 4	30	20	50	10	20	30
Age 5 - 14	60	85	145	50	65	115
Age 15 - 19	35	30	65	35	30	65
Age 20 - 24	25	20	45	25	15	40
Age 25 - 34	45	55	100	30	35	65
Age 35 - 44	75	85	160	65	60	125
Age 45 - 54	40	45	85	65	75	140
Age 55 - 64	40	45	85	45	55	100
Age 65 - 74	55	85	140	50	70	120
Age 75 and older	90	115	205	70	155	225
Total All Persons	490	600	1,090	440	575	1,015

Source: Statistics Canada 1996 & 2001 Census (numbers may not add up due to rounding)

Smoky Lake Population by Age Group (2001)

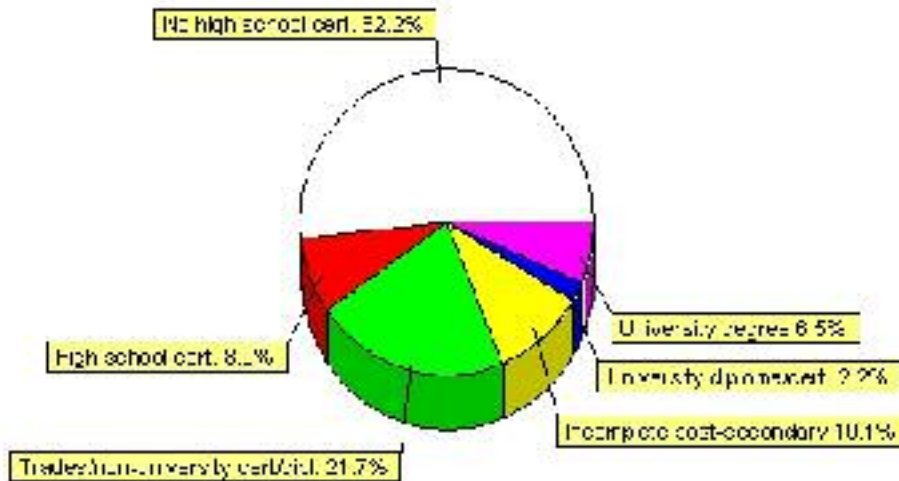


# Education

Highest level of schooling for Population 20yrs and older	2001	%
People without high school certificates	360	52.17%
People with high school certificates	55	7.97%
People with trades or non-university certificate or diploma	150	21.74%
People with post-secondary education (not completed)	70	10.14%
People with university diploma/certificate	15	2.17%
People with university degree	45	6.52%
Total Population 20 years and older	690	100.00%

Source: Statistics Canada 2001 Census (numbers may not add up due to rounding)

Smoky Lake Highest Level of Schooling 2001



Population with Post Secondary Qualifications	1996	%	2001	%
Agriculture and biological sciences	15	6.52%	25	11.90%
Commerce, management and business administration	20	8.70%	30	14.29%
Educational, recreational and counseling services	50	21.74%	15	7.14%
Engineering and applied science tech. and trades	70	30.43%	65	30.95%
Engineering and applied sciences	0	0.00%	0	0.00%
Fine and applied arts	0	0.00%	0	0.00%
Health professionals, science and technologies	40	17.39%	40	19.05%
Humanities and related fields	10	4.35%	10	4.76%
Mathematics and physical sciences	0	0.00%	10	4.76%
Social sciences and related fields	0	0.00%	0	0.00%
Other and/or no specialization	0	0.00%	0	0.00%
Total people with post secondary qualifications	230	100.00%	210	100.00%
Females with post-secondary qualifications	80	34.78%	100	47.62%
Males with post-secondary qualifications	150	65.22%	110	52.38%

Source: Statistics Canada 1996 & 2001 Census (numbers may not add up due to rounding)

# Labour Force

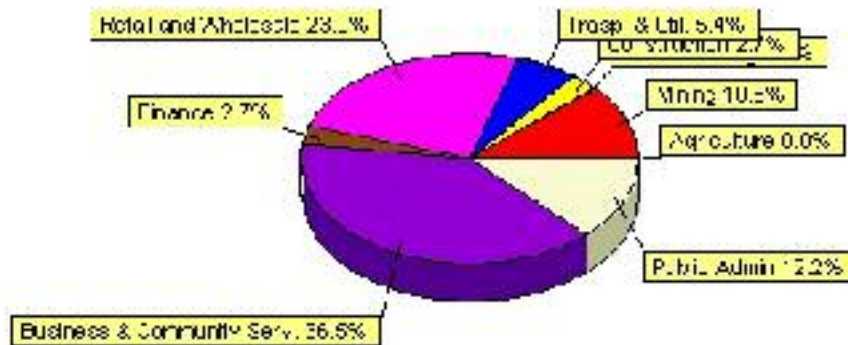
Labour force by activity	1996	2001
In the labour force, both sexes	380	375
Not in the labour force, both sexes	420	375
Total population 15 and over	800	750
Employed, both sexes	350	350
Unemployed, both sexes	25	30
Participation rate, both sexes	47.00%	64.00%
Unemployment rate, both sexes	6.00%	0.00%

Source: Statistics Canada 1996 & 2001 Census (numbers may not add up due to rounding)

Labour Force by Industry Division	1996	% of total	2001	% of total
Agriculture	30	8.00%	0	0.00%
Mining	10	2.67%	40	10.81%
Manufacturing	60	16.00%	0	0.00%
Construction	20	5.33%	10	2.70%
Transportation. & Utilities	35	9.33%	20	5.41%
Retail and Wholesale	55	14.67%	85	22.97%
Finance	20	5.33%	10	2.70%
Business & Community Services	125	33.33%	135	36.49%
Public Administration	30	8.00%	45	12.16%
Total All Industries	375	100.00%	370	100.00%

Source: Statistics Canada 1996 & 2001 Census (numbers may not add up due to rounding)

Smoky Lake Labour Force By Industry - 2001



Labour Force by Major Occupational Groups	1996	%	2001	%
Management occupations	20	5.33%	40	10.81%
Business, Finances and administrative occupations	60	16.00%	35	9.46%
Natural and applied sciences and related occupations	15	4.00%	10	2.70%
Health occupations	30	8.00%	50	13.51%
Occupations in social science; education; government and religion	15	4.00%	10	2.70%
Occupations in art; culture; recreation and sport	15	4.00%	10	2.70%
Sales and service occupations	110	29.33%	130	35.14%
Trades; transport; equipment operators and related occupations	55	14.67%	60	16.22%
Occupations unique to primary industry	15	4.00%	15	4.05%
Occupations unique to processing; manufacturing and utilities	40	10.67%	10	2.70%
Occupations not elsewhere classified	0	0.00%	10	2.70%
Total - All Occupations (major groups)	375	100.00%	370	100.00%
Females - All Occupations	165	44.00%	180	48.65%
Males - All Occupations	210	56.00%	190	51.35%

Source: Statistics Canada 1996 & 2001 Census (numbers may not add up due to rounding)

# Income

Family Income (Number of Families)	1996	%	2001	%
less than \$19,999	25	12.50%	30	14.63%
\$20,000 - \$39,999	45	22.50%	80	39.02%
\$40,000 - \$59,999	80	40.00%	55	26.83%
\$60,000 and over	50	25.00%	60	29.27%
Total number of families	200	100.00%	225	109.76%
Average family income	\$47,252		\$47,614	
Median family income	\$43,955		\$43,899	

Source: Statistics Canada 1996 & 2001 Census (numbers may not add up due to rounding)

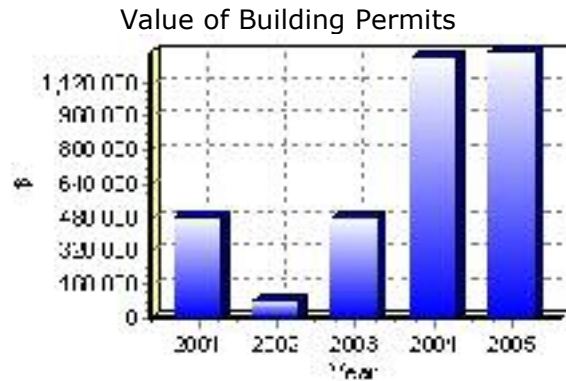
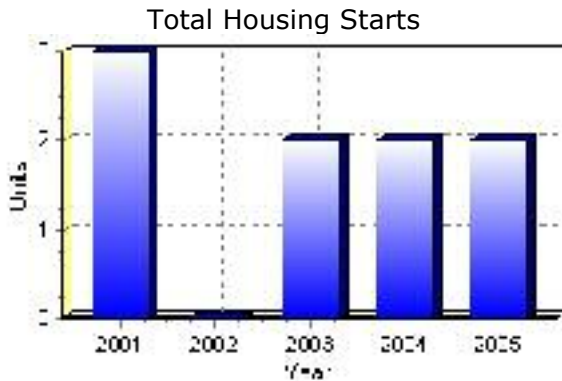
Household Income (Number of Households)	1996	%	2001	%
less than \$19,999	190	42.70%	165	37.93%
\$20,000 - \$39,999	85	19.10%	115	26.44%
\$40,000 - \$59,999	90	20.22%	60	13.79%
\$60,000 and over	25	5.62%	85	19.54%
Total number of households	445	100.00%	435	100.00%
Average household income	\$33,033		\$37,668	
Median household income	\$25,021		\$24,308	

Source: Statistics Canada 1996 & 2001 Census (numbers may not add up due to rounding)

## Building Permits

Total Building Permit Values	2001	2002	2003	2004	2005
Building Permits Value, Commercial	\$30,000	\$70,000	\$250,000	\$670,000	\$951,000
Building Permits Value, Industrial	\$0	\$0	\$0	\$0	\$0
Building Permits Value, Institutional	\$0	\$0	\$0	\$0	\$0
Building Permits Value, Residential	\$461,000	\$17,000	\$232,000	\$570,000	\$319,000
Building Permits Value, Total	\$491,000	\$87,000	\$482,000	\$1,240,000	\$1,270,000
Total Housing Starts	3	0	2	2	2

Source: Statistics Canada 2000-2004 Building Permits (numbers may not add up due to rounding)



## Dwellings

Occupied Private Dwellings by Type	1996	% of total	2001	% of total
Apartments	20	4.49%	20	4.60%
Detached Duplexes	0	0.00%	0	0.00%
Movable Dwellings	20	4.49%	5	1.15%
Other single attached house	0	0.00%	0	0.00%
Row and semi-detached house	25	5.62%	30	6.90%
Single-detached house	380	85.39%	380	87.36%
Total number of occupied private dwellings	445	100.00%	435	100.00%
Private dwellings, owned	335	75.28%	345	79.31%
Private Dwellings, rented	110	24.72%	90	20.69%

Source: Statistics Canada 1996 & 2001 Census (numbers may not add up due to rounding)

Private Dwellings by Period of Construction	# of Dwellings	% of total
Period of construction, before 1946	35	8.05%
Period of construction, 1946 - 1960	100	22.99%
Period of construction, 1961 - 1970	75	17.24%
Period of construction, 1971 - 1980	125	28.74%
Period of construction, 1981 - 1990	75	17.24%
Period of construction, 1991 - 2001	25	5.75%
Total number of private dwellings constructed	435	100.00%

Source: Statistics Canada 2001 Census (numbers may not add up due to rounding)

Disclaimer: Information in this profile has been provided from a variety of external sources. Although every effort has been made to ensure the accuracy, currency and reliability of the content and data, AlbertaFirst.com Ltd. accepts no responsibility in this regard.

© AlbertaFirst.com Ltd., 2006.