

St. Paul No. 19, County of

www.county.stpaul.ab.ca

Welcome

Welcome to our community. We hope the information contained within this profile is useful. For more information on our community, please visit our website at www.county.stpaul.ab.ca

Area Overview

The County of St. Paul is located in the northeast region of Alberta, 450 km from Edmonton on Highway 28. From Highway 28, the County connects with Highway 36 linking south to Two Hills and north to Lac La Biche. Highway 41 and 16 are the two other major routes that connect east of the County with Vermilion to Lloydminster.

The County is a community of mainly mixed farming with some oil industry in the east surrounding Elk Point 70 km from the Town of St. Paul.

The advantages of living in the County include country living with access to reasonable services for education, medical and social programs.

The Town of St. Paul is the major business centre in the County. Smaller hamlets within the county provide local services such as postal, grocery, service stations, confectionaries, cafes, etc. Each community is dedicated to offering many essential services such as fire departments. All leisure services are coordinated by many volunteer organizations.

The County of St. Paul includes the Towns of St. Paul and Elk Point, and the Hamlets of Ashmont, Heinsburg, Mallaig, LaFond, Lindbergh, St. Lina and St. Vincent.

Location

The County of St. Paul No. 19 is located in northeastern Alberta, between the Municipal District 87 at the north, Improvement District 18 at the north and east, Counties 21 and 24 to the south and County 13 to the west. The North Saskatchewan River is the major waterway in the County.

Economic Base

Oil & natural gas exploration and extraction are the major natural resource industries in the County. Other natural resources that are being extracted are salt by the Canadian Salt Company, peat moss by Lakeland Peat Moss Processors, timber from private and public lands, and gravel.

Agriculture is the main industry in the County, with approximately 1,179 farms producing everything from grain and specialty crops to domestic and specialty livestock. The County producers grow mainly course grains such as wheat, oats, barley and canola. Pea field acreages have also been on the increase over the last few years. Forage and grassland are also very important to area producers. In the 3 years that PFRA had their Permanent Cover Program, the County saw approximately 40,000 acres of hay and pasture land seeded. There is also a small percentage of acres seeded to

specialty crops such as alfalfa, timothy and canary seed for seed production. The livestock industry is just as diverse as the grain production industry. Beef cattle production is quite large with the average beef producer feeding 100-200 cow-calf pairs per year, but there are also larger feedlot operators feeding from 500-2000 head of cattle per year. There is also a large number of dairy, hog and poultry farms within the municipality.

The construction industry is also important. Most projects relate to agricultural or residential development as well as some oil field construction.

The tourism and recreation sector is a growing industry in the County. The Lakeland Tourist Association is active in increasing awareness of tourism and joint promotion of the Lakeland area. Efforts are underway to develop local historical resources. Some provincial historic sites include Fort de L'ile 11[1799-1801] in the Myrnam area, Fort George-Buckingham House in the Elk Point area, and the Frog Lake Massacre Site in Frog Lake.

In the smaller communities, the retail and service sector is the most important source of employment. Primary services such as service stations, general stores, restaurants and hardware outlets are common.

Economic Facts

There are approximately 32 oil & gas companies that are, or have been, active in the municipality within the last few years. The major companies working or holding leases in the area include Amoco, Westmin Resources, PanCanadian, Canadian Worldwide and Petro Canada. Small businesses are involved in the oil & gas servicing industry such as trucking, well servicing, steam cleaning, water hauling and pipeline construction.

The main industrial facility in the County is the Canadian Salt Company's salt plant in Lindbergh. The mine produces household, industrial, agricultural, water conditioning and ice control salt for the Prairie provinces and the Northwest Territories. In addition, Lakeland Peat operates a peat moss production plant in Mallaig, which sells to the United States. Lakeland Peat has also developed a new product to absorb oil, which is marketed globally.

Major Businesses Products/Services

Canadian Salt Company Salt Mine
Lakeland Peat Moss Processors Peat Moss Processing

Financial Institutions

The following financial institutions have offices in the County: Alberta Treasury Branch, Royal Bank, Canadian Imperial Bank of Commerce, Servus Credit Union, and the Toronto Dominion Bank.

Utilities

Electrical Power

Atco Electric Ltd.
Box 788
St. Paul, Alberta
Tel: 780-645-3603

Natural Gas

Alta Gas Ltd.
5102 - 49th Avenue
St. Paul, Alberta

Tel: 780-645-3734

Telephone

Alberta Government Telephones Ltd
Tel: 780-341-8100 [general enquiries]

Water Supply

The water supply for the County is administered by the County of St. Paul [Tel: 780-645-3301].

Waste Management

Waste management is accomplished through various landfill sites.

Taxation

	<u>Residential/Farmland</u>	<u>Non-Residential</u>
2004		
Municipal Tax Rate	9.3735	15.0132
Education - Alberta School Foundation Fund Tax Rate	4.5869	7.0523
Allowance for Non-Collection of Requisitioned Taxes	.1717	.1717

Mill Rates (1998)

Residential - Public 17.7950
Residential - Separate N/A
Non-Residential - Public 22.5794
Non-Residential - Separate N/A
Machinery & Equipment 13.6840
Linear 21.2520

Transportation

Air Service

There are two local airports in the County, one in St. Paul located 3 km west of town on Highway 28, and one in Elk Point located 19 km north of town on Secondary Highway 646.

Highways

Principal highways in the County are Highway #28 [east-west, St. Paul to Bonnyville to Edmonton], Highway #41 [north-south, Elk Point to Vermilion and Highway #16], and Highway #881 [north-south, 28A to Mannville on Highway 16]

Trucking Firms

Hi-Way 28 Freightways Ltd.
B & R Transport
Byers Transport
Vilna Transport
Various Grain & Livestock Haulers

Bus Services

Greyhound Bus Lines provides service to all major centres in the County.

Couriers and Taxis

Courier service is available from Greyhound Courier Express, Priority Post, Loomis and Purolator Couriers. Local taxi service is available in St. Paul by St. Paul Taxi Service.

Community Lifestyle

Recreation

Regional golf courses include the Elk Point Golf and Country Club [Elk Point], and the St. Paul Golf Club [St. Paul].

Provincial Recreation Area, Whitney Lakes Provincial Park, Kehewin Lakes Provincial Recreation Area, Mallaig Provincial Recreation Area, Lac Bellevue Municipal Recreation Area, Stoney Lake Municipal Recreation Area, Westcove Municipal Recreation Area, St. Paul Municipal Campground and the Floatingstone Lake Municipal Campground.

Community Organizations

Many community groups, sports clubs and service organizations operate in the County.

Religious Facilities

Several denominations are represented throughout the County.

Special Annual Events/Attractions

Local provincial historic sites include the Old St. Paul Rectory, Fort de L'Isle II [1799-1801], Fort George-Buckingham House, and the Frog Lake Massacre Site.

Hospitality

Accommodation

Galaxy Motel, St. Paul
Lakeland Motel, St. Paul
Super 8 Motel
The King's Motel and Restaurant, St. Paul
Woodland Motor Inn, St. Paul
Fort George Motel and Campground, Elk Point
Hilltop Motor Inn, Elk Point

Restaurants

Numerous dining establishments are located in St. Paul, Elk Point and throughout the County.

Education

The County of St. Paul is part of the St. Paul Education Regional Division #1 [Tel: 403-645-3323], and the East Central Francophone Education Regional Division [Tel: 403-645-3888]. All of the above-mentioned division headquarters are located in St. Paul.

Daycare/Nursery

St. Paul Day Care Society, located in the Town of St. Paul, can serve up to 50 children ages 19 months to 6 years. The Society is also responsible for the approval of day

homes in the County. Parent nursery services are provided through direct parental involvement. Weekly programs are offered throughout the County.

Public

Schools are available in St. Paul [K-12], Elk Point [K-12], Ashmont [K-12], Heinsburg [K-12], and Mallaig [K-12].

French language education is available in St. Paul and Mallaig through the East Central Francophone Education Regional Division.

Separate

Separate school education is available in St. Paul from the Glen Avon Protestant School [K-9].

Private

N/A

Post Secondary Education

Post-secondary education is available at Lakeland College, Blue Quills First Nations College, and Alberta Vocational College.

Health Care

St. Therese Hospital, located in the Town of St. Paul, has 66 acute-care beds, 30 long-term beds, 6 newborn bassinets, and 30 auxiliary beds. The hospital 95 staff, including 6 general practitioners.

Elk Point Municipal Hospital, located in the Town of Elk Point, has 32 acute-care beds, 10 long-term beds, and 4 newborn bassinets. The hospital has 26 professional staff, including 4 general practitioners.

The Northeastern Alberta Health Unit serves the County with offices in St. Paul and Elk Point. Programs are available in home care, speech-language pathology, community health nursing, hereditary diseases, environmental health, nutrition, dental, Alberta Aids to Daily Living, family life and health promotion.

The Associated Medical Centre, located in St. Paul, has 7 general practitioners on staff. Services include diagnostic imaging, a gynaecologist/obstetrician and a psychologist.

Emergency Services

Fire Protection

There are 4 volunteer fire departments in the County. The St. Paul Fire Department has 36 members, rescue van equipment with Jaws of Life, APSS Rescue Kit, 2 pumpers and 1 water truck. The Ashmont Fire Department has 23 members, 1 pumper truck and 1 rescue van. The Mallaig Fire Department has 33 members, 1 pumper truck, 1 rescue van and 1 water truck [Rescue Kit]. The Elk Point Fire Department has 30 members, 2 pumper trucks, 1 rescue van and Rescue Kit.

Police Services

The Royal Canadian Mounted Police [RCMP] has 23 members serving the County: 8 in the rural area, 6 in the Saddle Lake Reserve, and 9 in the Town of St. Paul.

Ambulance Services

St. Paul and District Ambulance Service is owed by the Town and County of St. Paul, and operated by St. Therese Hospital.

Community Services

Municipal

County of St. Paul No. 19
5015 - 49 Avenue
St. Paul, Alberta
T0A 3A4
Tel: 780-645-3301
Fax: 780-645-3104

Family and Community Support Services
Recreation
Public Works

Provincial

Several provincial government departments have offices in St. Paul, including Advanced Education, Family and Social Services, Labour, Municipal Affairs, Agriculture, Attorney General, Solicitor General, Forestry, Lands & Wildlife, Transportation and Utilities, Community Development, Public Safety Services, Economic Development & Tourism, Social Services, Career Development and Employment, Health, Environment, Public Works, Supply and Services, and Recreation & Parks.

Federal

Federal departments with offices in the County include Agriculture, Canada Employment, Canada Post, Farm Credit Corporation, Indian and Northern Affairs, and the Royal Canadian Mounted Police.

Key Contacts for Business Development

Municipal

County of St. Paul No. 19
5015 - 49 Avenue
St. Paul, Alberta
T0A 3A4
Tel: 780-645-3301
Fax: 780-645-3104
countysp@county.stpaul.ab.ca

Robert Bouchard - Reeve
County of St. Paul No. 19
5015 - 49 Ave.
St. Paul, AB T0A 3A4
Phone: 780-645-3301

Kim Heyman
County Administrator
kheyman@county.stpaul.ab.ca

Provincial (Updated December 2004)

[Alberta Economic Development](#)
Box 412
Room 308, Provincial Building

5025 - 49 Avenue
St. Paul, Alberta
T0A 3A4
Tel: 780-645-6358
Fax: 780-645-6241
[Garry Krause](#), Regional Manager
[Maryann Robinson](#), Client Service Representative

Ray Danyluk
Member of the Legislative Assembly (MLA)
Lac La Biche - St. Paul Constituency

Constituency Office
P.O. Box 1848; #108, 5002-48 Street
St. Paul, AB
T0A 3A0
Phone: (780) 645-6999
Fax: (780) 645-5787
laclabiche.stpaul@assembly.ab.ca

Legislature Office
#319, 10800-97 Avenue
Edmonton, AB
T5K - 2B6
Phone: (780) 415-9578
Fax: (780) 422-1671

Federal (Updated June 2004)

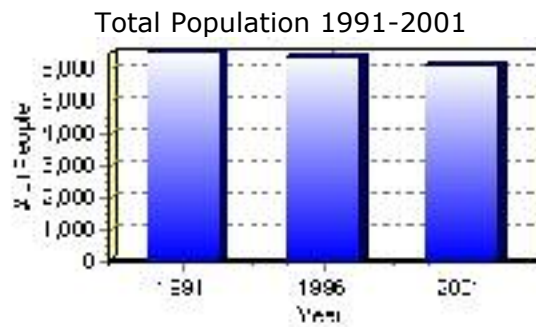
Dave Chatters
Member of Parliament [MP]
Westlock-St. Paul Constituency
House of Commons
Ottawa, Ontario
K1A 0A6

Constituency Office:
To be established soon. In the meantime, call 1-800-667-8450.

Population

Total Population	
Population 2004*	6,145
Population 2003*	6,145
Population 2002*	6,145
Population 2001**	6,145
Population 2000*	6,335
Population 1996**	6,335
Population 1991**	6,489
Population % change 1991-1996	-2.43%
Population % change 1996-2001	-3.09%

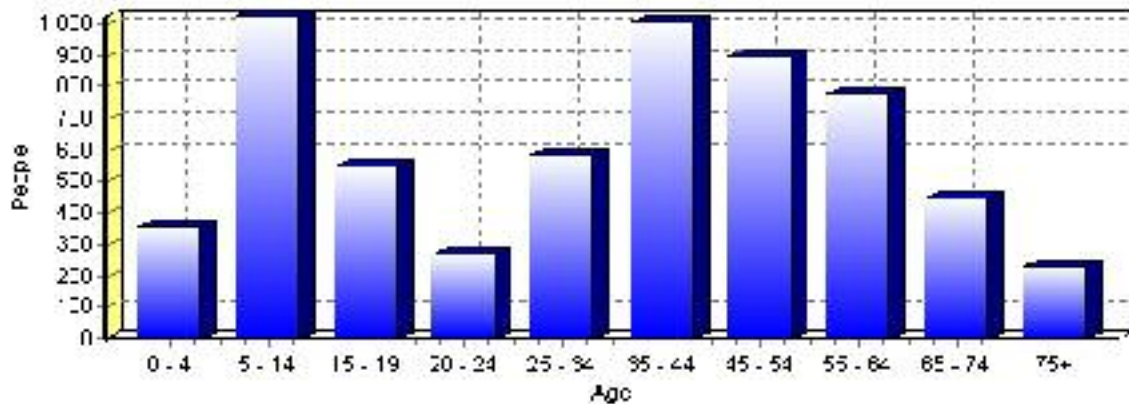
* Source: Official Population List, Alberta Municipal Affairs
 ** Source: Statistics Canada 1991, 1996, & 2001 Census



Population by Age and Gender	1996 Male	1996 Female	1996 Total	2001 Male	2001 Female	2001 Total
Age 0 - 4	210	190	400	175	180	355
Age 5 - 14	585	595	1,180	545	480	1,025
Age 15 - 19	320	255	575	275	270	545
Age 20 - 24	170	150	320	150	120	270
Age 25 - 34	375	405	780	285	300	585
Age 35 - 44	515	460	975	520	485	1,005
Age 45 - 54	400	430	830	460	440	900
Age 55 - 64	370	280	650	410	365	775
Age 65 - 74	255	205	460	260	185	445
Age 75 and older	115	85	200	125	105	230
Total All Persons	3,295	3,040	6,335	3,210	2,930	6,140

Source: Statistics Canada 1996 & 2001 Census (numbers may not add up due to rounding)

St. Paul No. 19, County of Population by Age Group (2001)

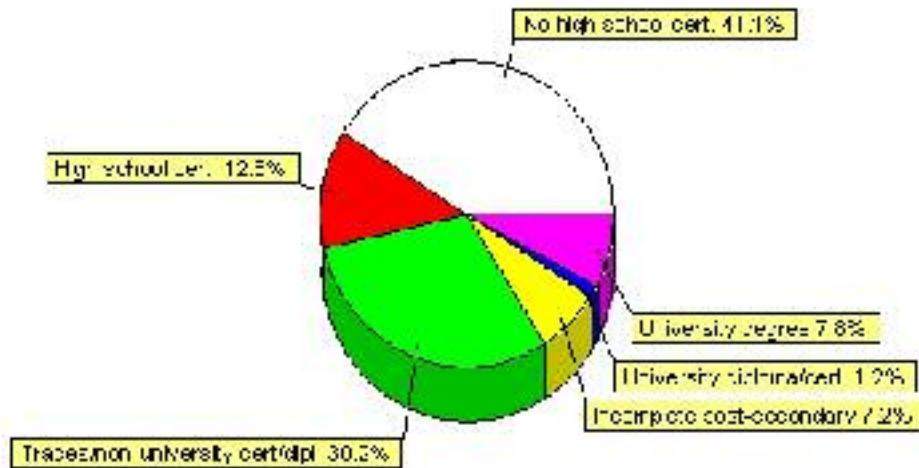


Education

Highest level of schooling for Population 20yrs and older	2001	%
People without high school certificates	1,740	41.09%
People with high school certificates	535	12.63%
People with trades or non-university certificate or diploma	1,280	30.22%
People with post-secondary education (not completed)	305	7.20%
People with university diploma/certificate	50	1.18%
People with university degree	330	7.79%
Total Population 20 years and older	4,235	100.00%

Source: Statistics Canada 2001 Census (numbers may not add up due to rounding)

St. Paul No. 19, County of Highest Level of Schooling 2001



Population with Post Secondary Qualifications	1996	%	2001	%
Agriculture and biological sciences	110	7.41%	120	7.23%
Commerce, management and business administration	195	13.13%	270	16.27%
Educational, recreational and counseling services	235	15.82%	230	13.86%
Engineering and applied science tech. and trades	515	34.68%	615	37.05%
Engineering and applied sciences	0	0.00%	20	1.20%
Fine and applied arts	70	4.71%	100	6.02%
Health professionals, science and technologies	225	15.15%	160	9.64%
Humanities and related fields	45	3.03%	40	2.41%
Mathematics and physical sciences	15	1.01%	20	1.20%
Social sciences and related fields	60	4.04%	60	3.61%
Other and/or no specialization	0	0.00%	0	0.00%
Total people with post secondary qualifications	1,485	100.00%	1,660	100.00%
Females with post-secondary qualifications	750	50.51%	805	48.49%
Males with post-secondary qualifications	735	49.49%	855	51.51%

Source: Statistics Canada 1996 & 2001 Census (numbers may not add up due to rounding)

Labour Force

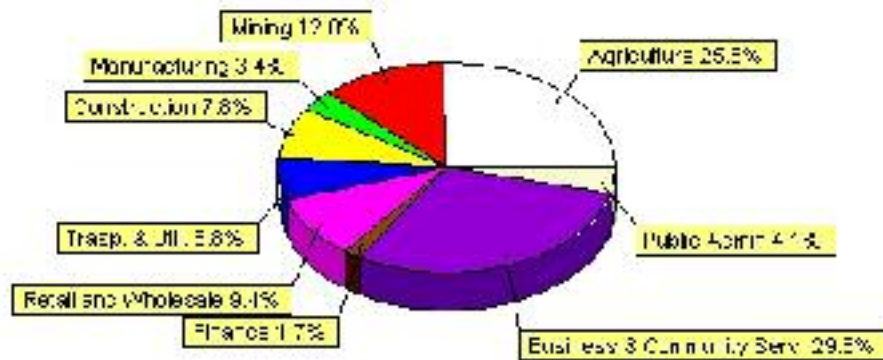
Labour force by activity	1996	2001
In the labour force, both sexes	3,500	3,555
Not in the labour force, both sexes	1,280	1,220
Total population 15 and over	4,775	4,775
Employed, both sexes	3,360	3,440
Unemployed, both sexes	140	115
Participation rate, both sexes	73.00%	65.00%
Unemployment rate, both sexes	4.00%	8.00%

Source: Statistics Canada 1996 & 2001 Census (numbers may not add up due to rounding)

Labour Force by Industry Division	1996	% of total	2001	% of total
Agriculture	880	25.25%	905	25.53%
Mining	300	8.61%	425	11.99%
Manufacturing	100	2.87%	120	3.39%
Construction	265	7.60%	275	7.76%
Transportation. & Utilities	210	6.03%	240	6.77%
Retail and Wholesale	510	14.63%	335	9.45%
Finance	100	2.87%	60	1.69%
Business & Community Services	890	25.54%	1,055	29.76%
Public Administration	160	4.59%	145	4.09%
Total All Industries	3,485	100.00%	3,545	100.00%

Source: Statistics Canada 1996 & 2001 Census (numbers may not add up due to rounding)

St. Paul No. 19, County of Labour Force By Industry - 2001



Labour Force by Major Occupational Groups	1996	%	2001	%
Management occupations	160	4.59%	225	6.35%
Business, Finances and administrative occupations	455	13.06%	395	11.14%
Natural and applied sciences and related occupations	25	0.72%	20	0.56%
Health occupations	165	4.73%	135	3.81%
Occupations in social science; education; government and religion	125	3.59%	220	6.21%
Occupations in art; culture; recreation and sport	70	2.01%	55	1.55%
Sales and service occupations	670	19.23%	565	15.94%
Trades; transport; equipment operators and related occupations	690	19.80%	745	21.02%
Occupations unique to primary industry	965	27.69%	1,090	30.75%
Occupations unique to processing; manufacturing and utilities	160	4.59%	95	2.68%
Occupations not elsewhere classified	15	0.43%	15	0.42%
Total - All Occupations (major groups)	3,485	100.00%	3,545	100.00%
Females - All Occupations	1,480	42.47%	1,555	43.86%
Males - All Occupations	2,005	57.53%	1,990	56.14%

Source: Statistics Canada 1996 & 2001 Census (numbers may not add up due to rounding)

Income

Family Income (Number of Families)	1996	%	2001	%
less than \$19,999	235	14.69%	140	9.12%
\$20,000 - \$39,999	595	37.19%	485	31.60%
\$40,000 - \$59,999	330	20.63%	410	26.71%
\$60,000 and over	440	27.50%	440	28.66%
Total number of families	1,600	100.00%	1,475	96.09%
Average family income	\$46,381		\$62,035	
Median family income	\$39,298		\$51,032	

Source: Statistics Canada 1996 & 2001 Census (numbers may not add up due to rounding)

Household Income (Number of Households)	1996	%	2001	%
less than \$19,999	535	25.24%	345	15.72%
\$20,000 - \$39,999	685	32.31%	585	26.65%
\$40,000 - \$59,999	385	18.16%	450	20.50%
\$60,000 and over	195	9.20%	810	36.90%
Total number of households	2,120	100.00%	2,195	100.00%
Average household income	\$41,316		\$57,452	
Median household income	\$33,841		\$45,954	

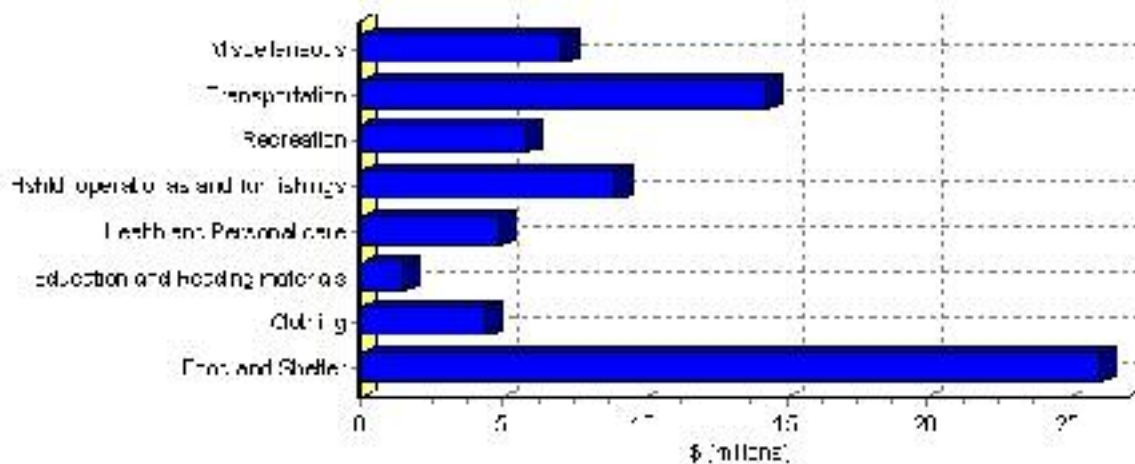
Source: Statistics Canada 1996 & 2001 Census (numbers may not add up due to rounding)

Family Expenditure

Expenditure Category	1992	% of total	1996	% of total
Food and Shelter	\$22,559,965	37.29%	\$26,111,297	35.60%
Clothing	\$4,132,075	6.83%	\$4,445,555	6.06%
Education and Reading materials	\$1,276,705	2.11%	\$1,540,308	2.10%
Health and Personal care	\$3,773,385	6.24%	\$4,914,192	6.70%
Hshld. operationas and furnishings	\$6,657,280	11.00%	\$9,023,596	12.30%
Recreation	\$4,927,355	8.14%	\$5,864,708	8.00%
Transportation	\$12,364,075	20.44%	\$14,343,463	19.56%
Miscellaneous	\$4,789,730	7.92%	\$7,095,551	9.68%
Total Current Consumption	\$60,502,985	100.00%	\$73,338,670	100.00%
Total # of Households	2,075		2,118	
Average Consumption per Household	\$29,158		\$34,626	

Source: Statistics Canada Family Expenditure Survey 1992 & 1996 (numbers may not add up due to rounding).

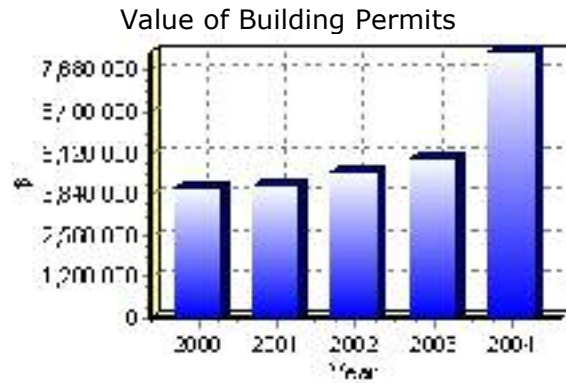
St. Paul No. 19, County of Family Expenditures (1996)



Building Permits

Total Building Permit Values	2000	2001	2002	2003	2004
Building Permits Value, Commercial	\$130,000	\$0	\$177,000	\$435,000	\$922,000
Building Permits Value, Industrial	\$574,000	\$0	\$0	\$325,000	\$455,000
Building Permits Value, Institutional	\$0	\$0	\$0	\$19,000	\$0
Building Permits Value, Residential	\$3,323,000	\$4,115,000	\$4,342,000	\$4,162,000	\$6,879,000
Building Permits Value, Total	\$4,027,000	\$4,115,000	\$4,519,000	\$4,941,000	\$8,256,000
Total Housing Starts	28	32	32	26	45

Source: Statistics Canada 2000-2004 Building Permits (numbers may not add up due to rounding)



Dwellings

Occupied Private Dwellings by Type	1996	% of total	2001	% of total
Apartments	0	0.00%	15	0.68%
Detached Duplexes	10	0.47%	5	0.23%
Movable Dwellings	255	12.03%	230	10.50%
Other single attached house	10	0.47%	0	0.00%
Row and semi-detached house	0	0.00%	10	0.46%
Single-detached house	1,845	87.03%	1,930	88.13%
Total number of occupied private dwellings	2,120	100.00%	2,190	100.00%
Private dwellings, owned	1,835	86.56%	1,950	89.04%
Private Dwellings, rented	280	13.21%	245	11.19%

Source: Statistics Canada 1996 & 2001 Census (numbers may not add up due to rounding)

Private Dwellings by Period of Construction	# of Dwellings	% of total
Period of construction, before 1946	260	11.82%
Period of construction, 1946 - 1960	295	13.41%
Period of construction, 1961 - 1970	235	10.68%
Period of construction, 1971 - 1980	550	25.00%
Period of construction, 1981 - 1990	570	25.91%
Period of construction, 1991 - 2001	290	13.18%
Total number of private dwellings constructed	2,200	100.00%

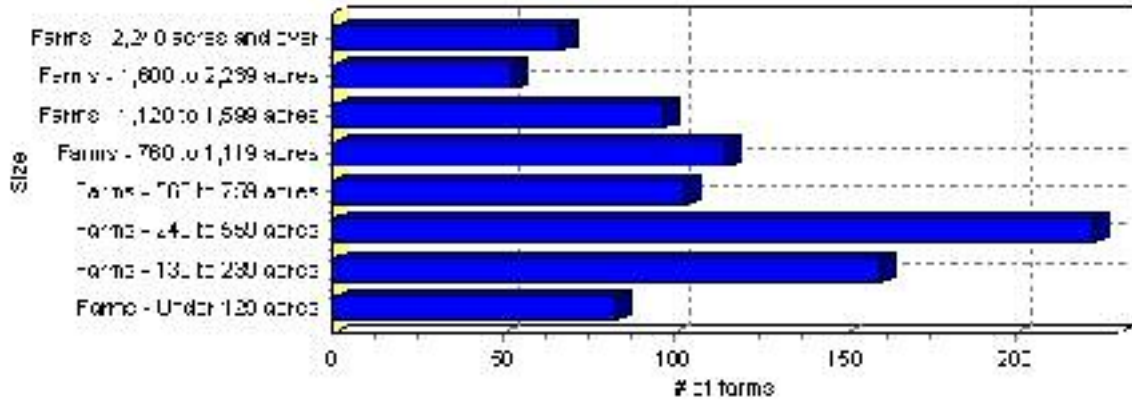
Source: Statistics Canada 2001 Census (numbers may not add up due to rounding)

Farming

Farms by Total Farm Area (2001)	# of Farms	% of total
Farms - Under 129 acres	83	9.22%
Farms - 130 to 239 acres	160	17.78%
Farms - 240 to 559 acres	223	24.78%
Farms - 560 to 759 acres	103	11.44%
Farms - 760 to 1,119 acres	115	12.78%
Farms - 1,120 to 1,599 acres	97	10.78%
Farms - 1,600 to 2,239 acres	52	5.78%
Farms - 2,240 acres and over	67	7.44%
Total number of farms reporting	900	100.00%

Source: Statistics Canada 2001 Census of Agriculture (numbers may not add up due to rounding)

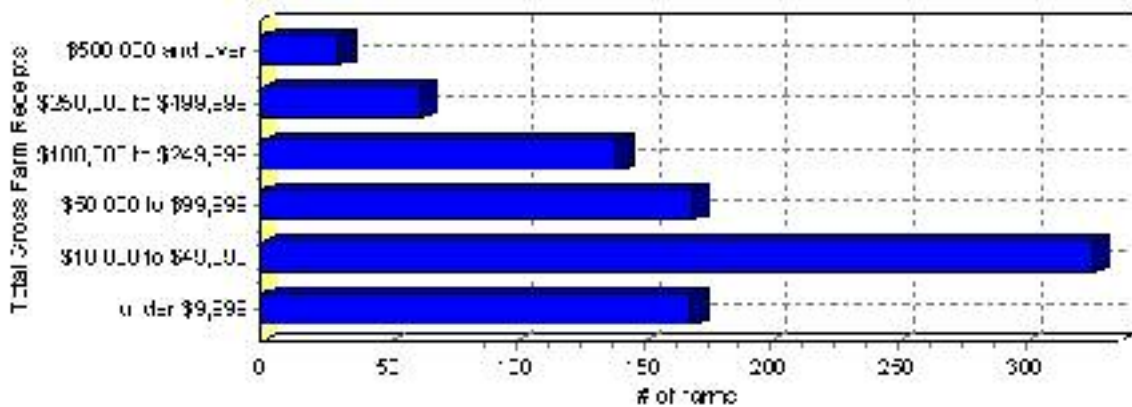
of Farms by Total Farm Area



Farms by Total Gross Farm Receipts - 2001	# of Farms	% of total
Farms gross farm receipts - under \$9,999	169	18.78%
Farms gross farm receipts - \$10,000 to \$49,999	327	36.33%
Farms gross farm receipts - \$50,000 to \$99,999	170	18.89%
Farms gross farm receipts - \$100,000 to \$249,999	140	15.56%
Farms gross farm receipts - \$250,000 to \$499,999	63	7.00%
Farms gross farm receipts - \$500,000 and over	31	3.44%
Total number of farms reporting	900	100.00%

Source: Statistics Canada 2001 Census of Agriculture (numbers may not add up due to rounding)

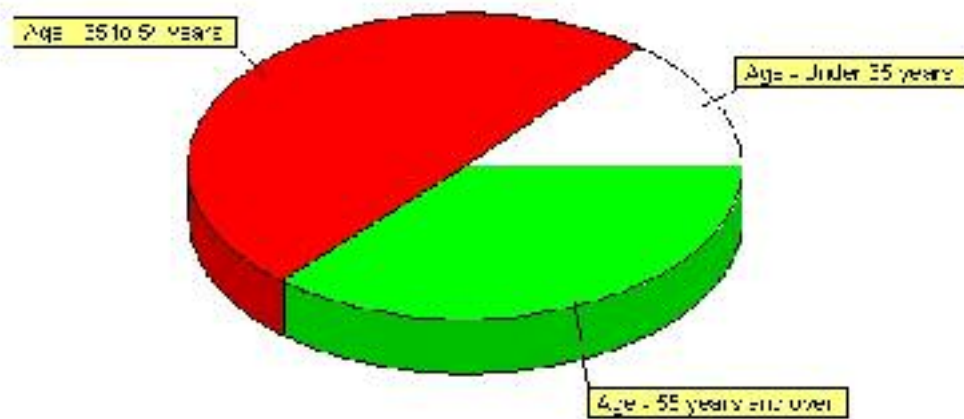
Total Gross Farm Receipts



Farming, Continued

Characteristics of Farm Operators	#	%
Age - Under 35 years	180	14.17%
Age - 35 to 54 years	630	49.61%
Age - 55 years and over	465	36.61%
Average age of operators	49	
Number of operators - Female		
Number of operators - Female	345	27.17%
Number of operators - Male		
Number of operators - Male	925	72.83%
Total number of operators reporting	1,270	100.00%
Source: Statistics Canada 2001 Census of Agriculture(numbers may not add up due to rounding)		

Age of Farm Operators

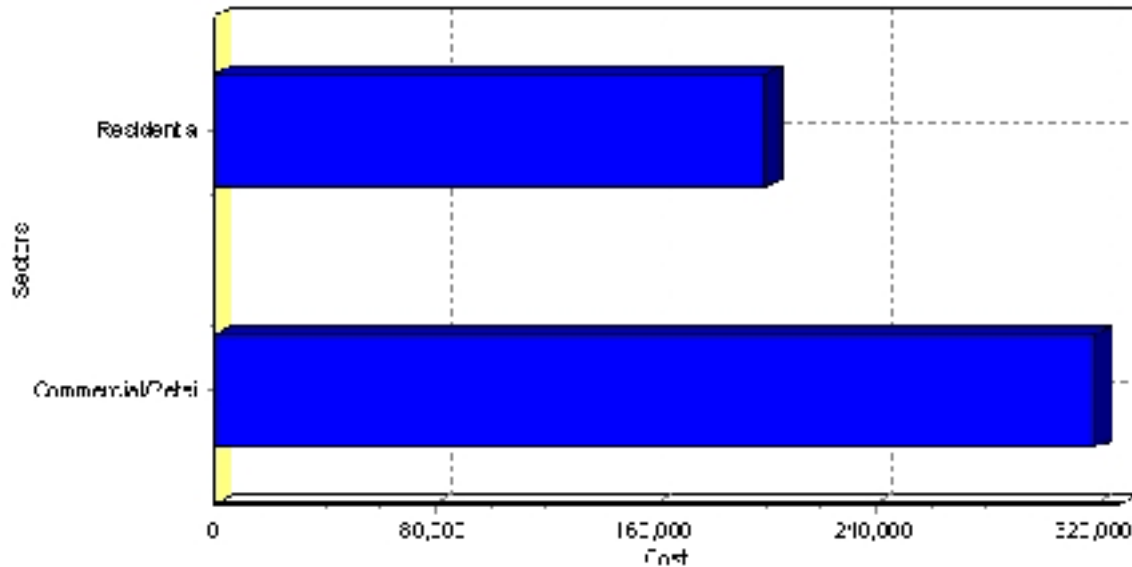


Summary of Projects in St. Paul No. 19, County of as of September 2005

Project Sector	Number of Projects	Project Cost
Commercial/Retail	2	\$320,000
Residential	1	\$200,000
Total	3	\$520,000

This inventory lists projects in Alberta that have recently been completed, are under construction, or are proposed to start construction. Not all projects are listed due to reasons of confidentiality and/or due to information not being available at the time of printing. Project data is obtained from public information sources, where possible, this data has been verified with the project proponent/developer, users of the Inventory may wish to confirm project data with the proponent/developer. The inventory does not breakdown project expenditures by any given year. The cost of a project is the value of expenditures expected over all phases of project construction, which may span over two or more years. Cost of projects listed in the Inventory are estimated values only. Source: Alberta Economic Development, 2004.

Value of Projects by Sector (as of September 2005)



Project Status	Number of Projects	Project Cost
Under Construction	3	\$520,000
Total	3	\$520,000

This inventory lists projects in Alberta that have recently been completed, are under construction, or are proposed to start construction. Not all projects are listed due to reasons of confidentiality and/or due to information not being available at the time of printing. Project data is obtained from public information sources, where possible, this data has been verified with the project proponent/developer, users of the Inventory may wish to confirm project data with the proponent/developer. The inventory does not breakdown project expenditures by any given year. The cost of a project is the value of expenditures expected over all phases of project construction, which may span over two or more years. Cost of projects listed in the Inventory are estimated values only. Source: Alberta Economic Development, 2004.

Largest Projects in St. Paul No. 19, County of as of September 2005

Company Name	Project Description	Project Location	Project Cost	Construction Schedule	Status
Lakeland Agro	Expansion to Existing Operation	County of St. Paul	\$250,000	-	Under Construction
Labrecque Paradise	Subdivision at Lac Sante	County of St. Paul	\$200,000	-	Under Construction
Mallaig Legion	Addition	County of St. Paul	\$70,000	-	Under Construction

Disclaimer: Information in this profile has been provided from a variety of external sources. Although every effort has been made to ensure the accuracy, currency and reliability of the content and data, AlbertaFirst.com Ltd. accepts no responsibility in this regard.

© AlbertaFirst.com Ltd., 2005.